

LED Street Lights

Features & Benefits	
LED Street Light – SP90	LED Street Light – LU1
<ul style="list-style-type: none">■ Power Consumption: 28W■ High Brightness: 2,100lm■ 50,000 Hours life■ Save 75% energy■ CE, RoHS, UL approved■ 85-264VAC or 12-24VDC■ E40■ 1 Year Warranty	<ul style="list-style-type: none">■ Power Consumption: 28W■ High Brightness: 2,100lm■ 50,000 Hours life■ Save 75% energy■ CE, RoHS, UL approved■ 85-264VAC or 12-24VDC■ Hoop■ 2 Years Warranty
 A close-up photograph of the LED Street Light – SP90. It features a white, cylindrical body with a clear lens at the top containing a grid of LED chips. The base is a standard E40 screw-in socket. The background is a gradient of blue.	 A close-up photograph of the LED Street Light – LU1. It has a white, teardrop-shaped body with a rectangular lens on the front. The background is a gradient of blue.
 A photograph showing the LED Street Light – SP90 mounted on a metal pole. The light is illuminated, and the background is a clear blue sky. A timestamp '2008/08/13 05:07' is visible in the bottom right corner.	 A photograph showing the LED Street Light – LU1 mounted on a tall pole. The light is illuminated, and the background shows a multi-story building and a clear blue sky.

Features & Benefits

LU2 – LED Street Light

- Power Consumption: **56W**
- High Brightness: **4,200lm**
- 50,000 Hours life
- Save 75% energy
- CE, RoHS, UL approved
- 85-264VAC or 12-24VDC
- Hoop
- 3 Years Warranty



LU4 – LED Street Light

- Power Consumption: **112 W**
- High Brightness: **8,400lm**
- 50,000 Hours life
- Save 75% energy
- CE, RoHS, UL approved
- 85-264VAC or 12-24VDC
- Hoop
- 3 Years Warranty



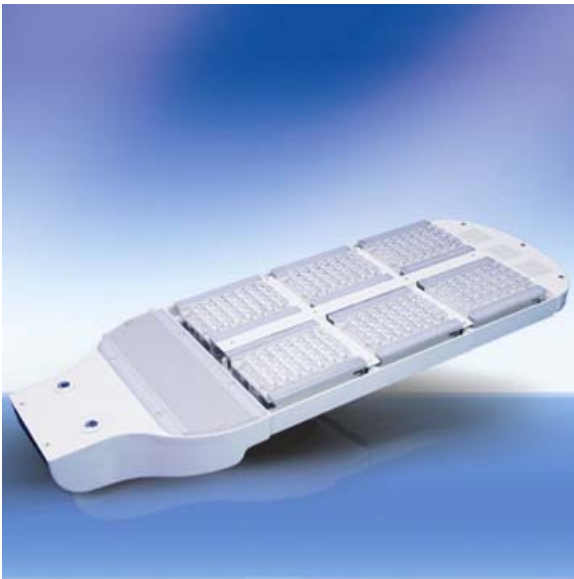
Installation and Lighting Effects Pictures



Features & Benefits

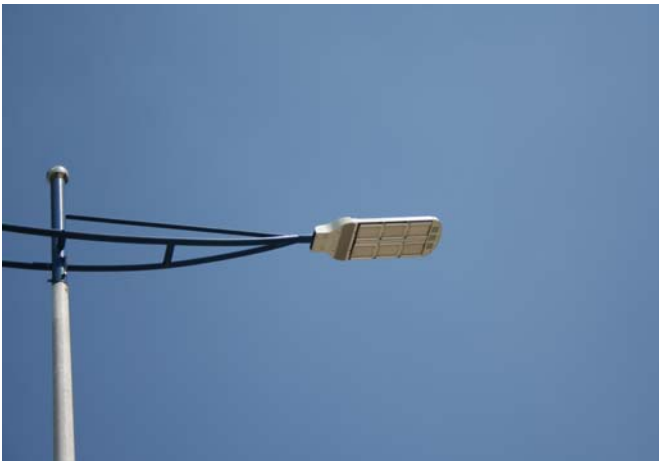
LU6 – LED Street Light

- Power Consumption: **168W**
- High Brightness: **12,600lm**
- 50,000 Hours life
- Save 75% energy
- CE, RoHS, UL approved
- 85-264VAC or 12-24VDC
- Hoop
- 3 Years Warranty



LED Street Light – LU8

- Power Consumption: **224W**
- High Brightness: **16,800lm**
- 50,000 Hours life
- Save 75% energy
- CE, RoHS, UL approved
- 85-264VAC or 12-24VDC
- Hoop
- 3 Years Warranty



Features & Benefits

SD2 – High Power LED Tunnel Light

- Power Consumption: **56 W**
- High Brightness: **4,200lm**
- 50,000 Hours life
- Save 75% energy
- CE, RoHS, UL approved
- 85-264VAC or 12-24VDC
- Hoop
- 1 Year Warranty



Installation and Lighting Effects Pictures



Shenzhen Bang-Bell Electronics Co., Ltd.

Add: 5/F, Building 4, Tianfu'an Industrial Park, Lezhujiao, Jiu wei, Xixiang, Bao'an, Shenzhen, Guangdong, China.

Tel.: +86 755 3367 6001 Fax: +86 755 3367 6038 Mobile: +86 138 2317 7749

E-mail: jasonyang@bbeled.com Website: www.bbeled.com MSN: jasonyang1977@hotmail.com